

2.2L / 3.2G SERIES

# PRESTON SUPERDECK™

*The PRESTON SUPERDECK™ has long been the preferred loading platform system used worldwide in multi-storey construction because it saves time, reduces costs, and improves safety.*



**COMBISAFE®**  
SAFETY BY SYSTEMS

# THE SUPERDECK PLATFORM SYSTEM

---

*The PRESTON SUPERDECK is a retractable loading platform system ideally positioned vertically one above the other for fast delivery of building materials, directly to the designated floor of a multi-storey building.*

The SUPERDECK was designed to minimise any hindrance to crane ropes and loads, significantly increasing safety, and by vertically stacking the units this further increases the efficiency of materials handling and crane productivity.



## ✓ COMPATIBILITY

The SUPERDECK does not interfere with the external completion or finish of the building because the system is usually installed vertically, one above the other, providing minimal disruption to the installation of the building façade to allow closure and weatherproofing for the finishing trades.

## ✓ SIMPLICITY

The SUPERDECK platform system is simple to understand and can be installed or relocated within 15 minutes.

## ✓ ADAPTABILITY

The SUPERDECK's unique adaptability has been paramount in its success. It will suit almost every 'typical' situation whilst also being able to be used on a wide variety of complex or difficult installations.

Harness Anchor Point



Adjustable Ramp



Bottom Gravity Door Lock



Patented Captive Locking System



Side Panel Lock



Top Door Lock



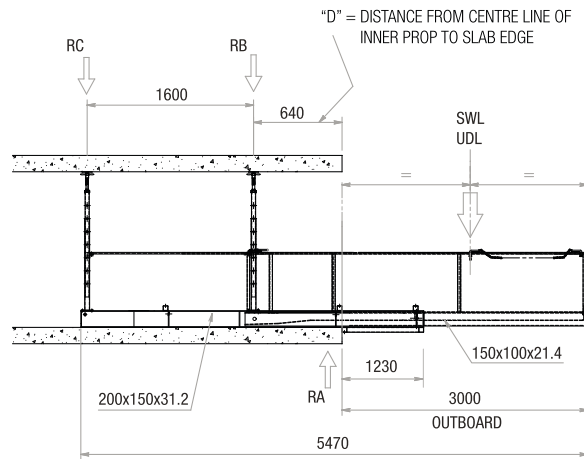
## 2.2L

### SUPERDECK™ PLATFORM 2.2L PROP REACTIONS METRIC

|          |        |
|----------|--------|
| OUTBOARD | D      |
| 3000 mm  | 640 mm |

|                           |         |
|---------------------------|---------|
| OUTBOARD                  | 3000 mm |
| LOAD / REACTION IN TONNES |         |
| SWL – UDL                 | 2500kg  |
| RA*                       | 5.7T    |
| RB*                       | 3.5T    |
| RC*                       | 0.2T    |

\* REACTIONS ON EACH SIDE OF THE PLATFORM.



\* ASSUMED LOAD ALWAYS CENTRED ON OUTBOARD OF THE PLATFORM.

\* ALL LOADS ARE STATIC i.e. NO LOAD FACTORS APPLIED

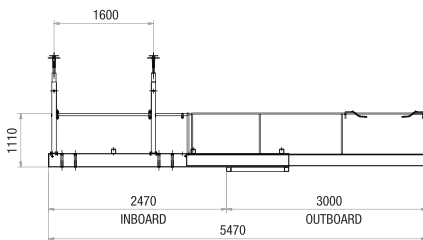
\* TOTAL TARE WEIGHT = 1300kg.

\* ALL LOADS ARE WORKING LOADS i.e. NO LOAD FACTORS APPLIED

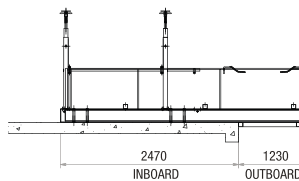
\* ALL LOADS ARE STATIC LOADS. i.e. NO IMPACT FORCES FACTORED INTO REACTIONS.

\* HORIZONTAL FORCES NOT TAKEN INTO ACCOUNT.

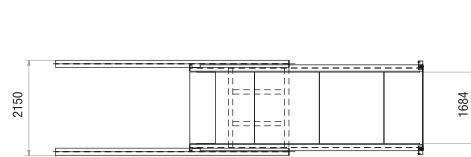
### SUPERDECK™ PLATFORM 2.2L DIMENSIONS METRIC



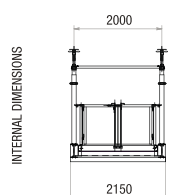
SIDE ELEVATION



RETRACTED POSITION



PLAN VIEW



FRONT ELEVATION

THE INFORMATION PROVIDED IS INDICATIVE ONLY AND MAY VARY DEPENDING ON SITE CONDITION. ALL SUPERDECK INSTALLATION ON SITE MUST BE APPROVED BY SITE ENGINEER.