

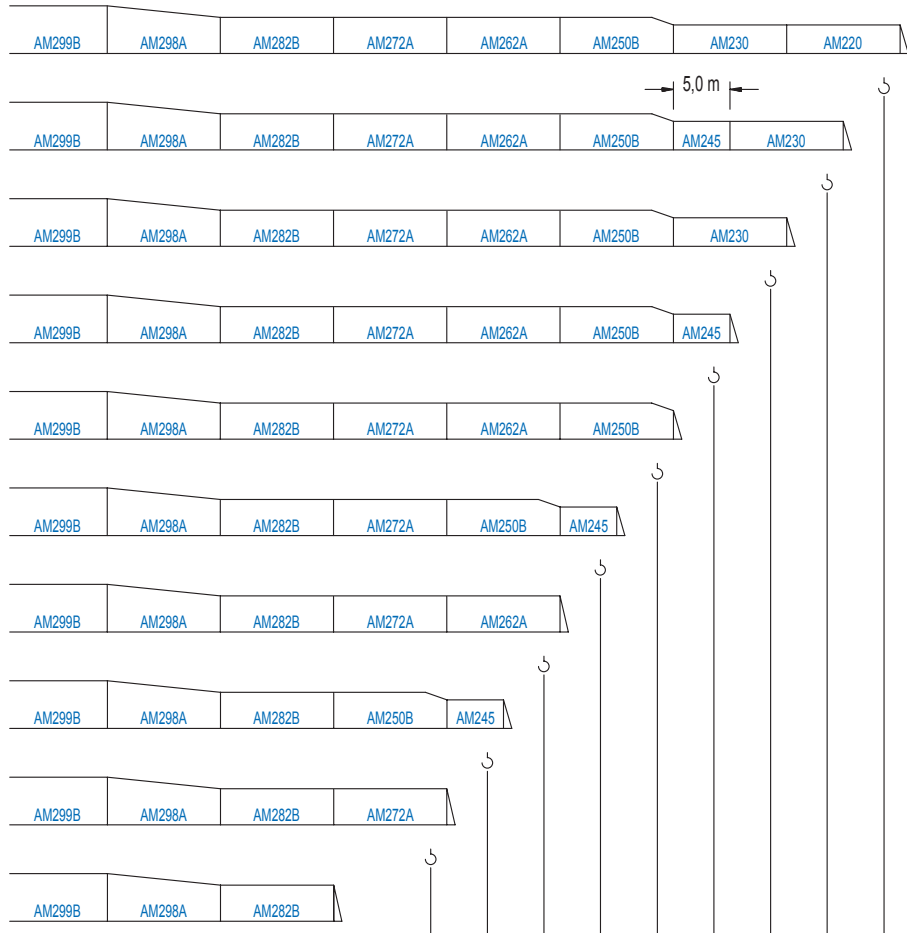
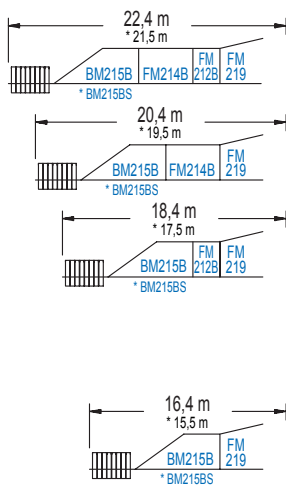
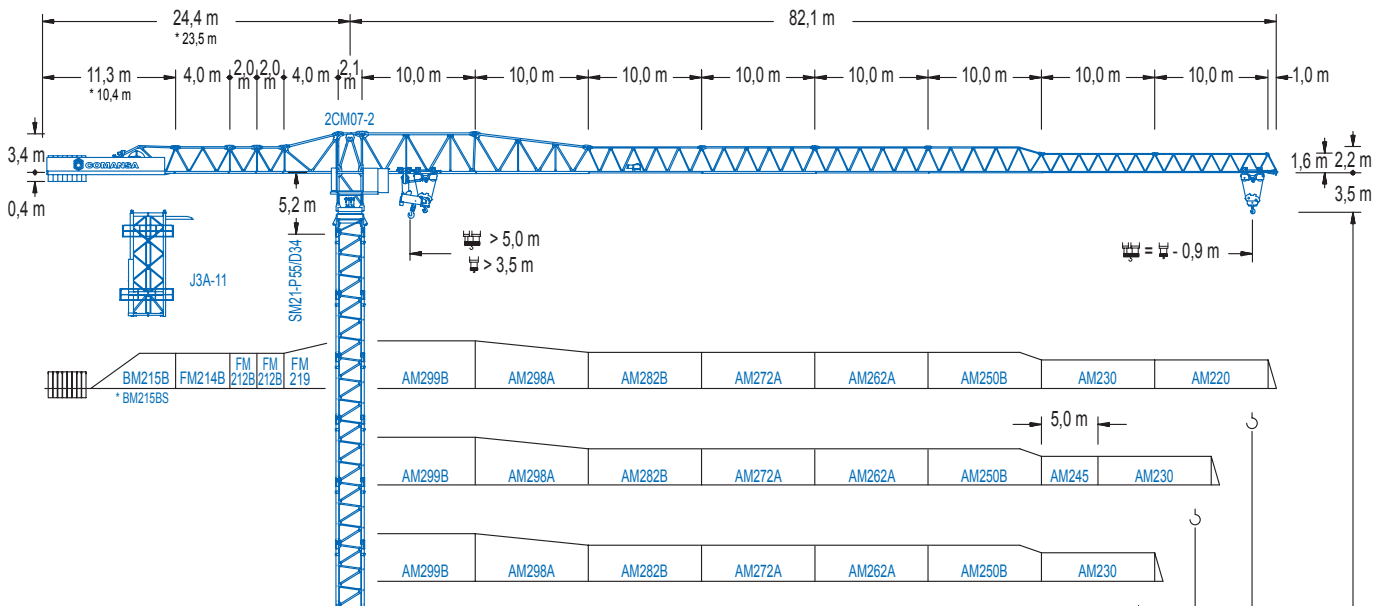


COMANSA

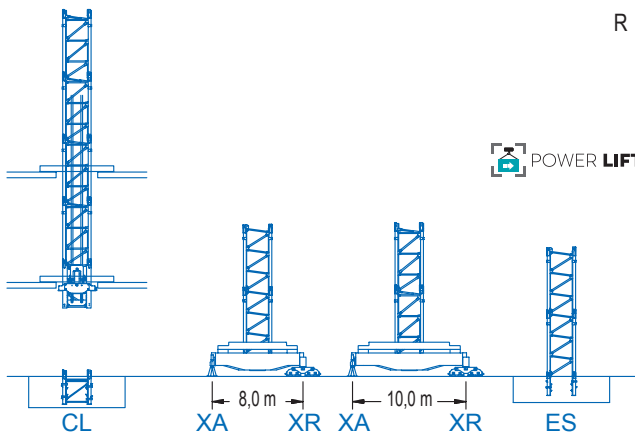
2100 Series

21 LC 650

DT 25 t



| R | 30 | 40 | 45 | 50 | 55 | 60 | 65 | 70 | 75 | 80 | m |
|---|-------|-------|-------|-------|-------|-------|------|------|------|------|----|
| | 22500 | 16400 | 14200 | 12500 | 12200 | 10400 | 8300 | 6600 | 4900 | 4100 | kg |
| | 24750 | 18040 | 15620 | 13750 | 12500 | 11440 | 9130 | 7260 | 5390 | 4510 | kg |



2100 Series

CE EN 14439 (C/25)

DIAGRAMA DE CARGAS

Load chart / Diagramme de charges / Lastdiagramm / Diagramma di carico / Диаграмма распределения нагрузки

| R (m) | ↑ | | | | | ↓ | | | | | | | | | | | |
|-------|-------|-------|-------|-------|-------|-------|-------|-------|-------|-------|-------|-------|------|------|------|------|----|
| 80 | 15,4 | 18 | 20 | 23 | 27,7 | 30,5 | 35 | 40 | 45 | 50 | 55 | 60 | 65 | 70 | 75 | 80,0 | m |
| | 25000 | 20870 | 18440 | 15620 | 12500 | 12500 | 10710 | 9220 | 8070 | 7160 | 6410 | 5790 | 5270 | 4820 | 4440 | 4100 | kg |
| 75 | | 16,7 | 20 | 23 | 25 | 29,9 | 33,0 | 40 | 45 | 50 | 55 | 60 | 65 | 70 | 75,0 | m | |
| | | 25000 | 20200 | 17140 | 15520 | 12500 | 12500 | 10100 | 8850 | 7860 | 7050 | 6370 | 5800 | 5320 | 4900 | kg | |
| 70 | | | 19,9 | 23 | 25 | 30 | 35,8 | 39,6 | 45 | 50 | 55 | 60 | 65 | 70,0 | m | | |
| | | | 25000 | 21090 | 19140 | 15460 | 12500 | 12500 | 10860 | 9660 | 8680 | 7870 | 7190 | 6600 | kg | | |
| 65 | | | | 22,4 | 25 | 30 | 35 | 40,6 | 44,9 | 50 | 55 | 60 | 65,0 | m | | | |
| | | | | 25000 | 22060 | 17860 | 14910 | 12500 | 12500 | 11120 | 10000 | 9080 | 8300 | kg | | | |
| 60 | | | | | 25,2 | 30 | 35 | 40 | 45,7 | 50,8 | 55 | 60,0 | m | | | | |
| | | | | | 25000 | 20490 | 17140 | 14660 | 12500 | 12500 | 11450 | 10400 | kg | | | | |
| 55 | | | | | | 26,6 | 30 | 35 | 40 | 48,4 | 53,8 | 55,0 | m | | | | |
| | | | | | | 25000 | 21840 | 18300 | 15660 | 12500 | 12500 | 12200 | kg | | | | |
| 50 | | | | | | | 27,0 | 30 | 35 | 40 | 45 | 49,1 | m | | | | |
| | | | | | | | 25000 | 22230 | 18630 | 15960 | 13890 | 12500 | kg | | | | |
| 45 | | | | | | | | 27,0 | 30 | 35 | 40 | 44,1 | m | | | | |
| | | | | | | | | 25000 | 22220 | 18620 | 15950 | 14200 | kg | | | | |
| 40 | | | | | | | | | 27,1 | 30 | 35 | 39,1 | m | | | | |
| | | | | | | | | | 25000 | 22280 | 18680 | 16400 | kg | | | | |
| 30 | | | | | | | | | | 26,6 | 29,1 | m | | | | | |
| | | | | | | | | | | 25000 | 22500 | kg | | | | | |

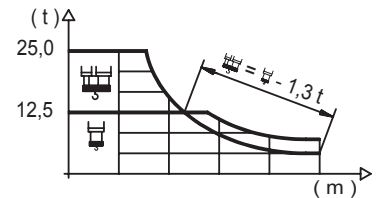
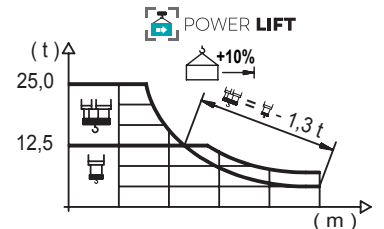


DIAGRAMA DE CARGAS POWERLIFT

Load chart PowerLift / Diagramme de charges PowerLift / Lastdiagramm PowerLift / Diagramma di carico PowerLift / Диаграмма распределения нагрузки PowerLift

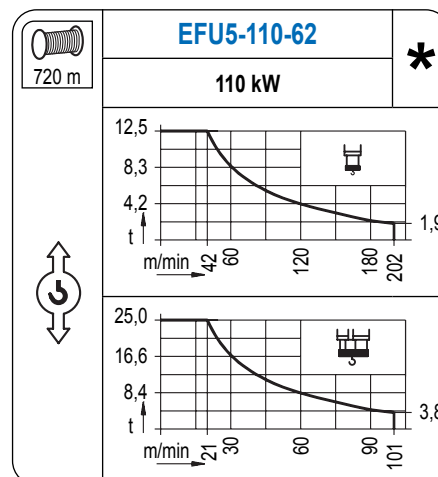
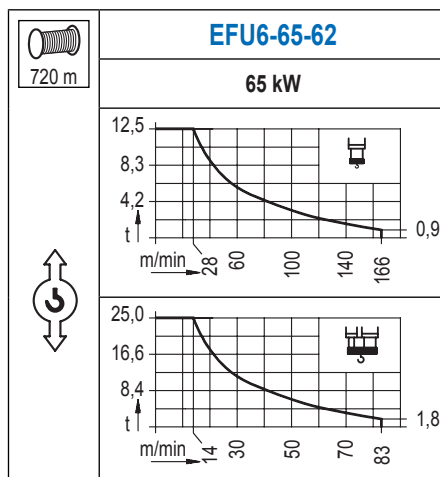
| R (m) | ↑ | | | | | ↓ | | | | | | | | | | | |
|-------|-------|-------|-------|-------|-------|-------|-------|-------|-------|-------|-------|-------|------|------|------|------|----|
| 80 | 16,6 | 20 | 23 | 25 | 29,8 | 32,9 | 35 | 40 | 45 | 50 | 55 | 60 | 65 | 70 | 75 | 80,0 | m |
| | 25000 | 20130 | 17080 | 15460 | 12500 | 12500 | 11670 | 10060 | 8810 | 7820 | 7010 | 6340 | 5780 | 5290 | 4880 | 4510 | kg |
| 75 | 18,0 | 20 | 23 | 25 | 28 | 32,4 | 35,7 | 40 | 45 | 50 | 55 | 60 | 65 | 70 | 75,0 | m | |
| | 25000 | 22090 | 18770 | 17020 | 14880 | 12500 | 12500 | 11030 | 9680 | 8600 | 7720 | 6990 | 6370 | 5840 | 5390 | kg | |
| 70 | | 21,5 | 23 | 25 | 28 | 30 | 35 | 38,9 | 43,0 | 50 | 55 | 60 | 65 | 70,0 | m | | |
| | | 25000 | 23140 | 21020 | 18440 | 17010 | 14180 | 12500 | 12500 | 10590 | 9530 | 8640 | 7900 | 7260 | kg | | |
| 65 | | | | 24,8 | 28 | 30 | 35 | 40 | 44,9 | 49,8 | 55 | 60 | 65,0 | m | | | |
| | | | | 25000 | 21720 | 20070 | 16780 | 14350 | 12500 | 12500 | 11200 | 10180 | 9310 | kg | | | |
| 60 | | | | | 27,4 | 30 | 35 | 40 | 45 | 49,8 | 55,3 | 60,0 | m | | | | |
| | | | | | 25000 | 22580 | 18920 | 16210 | 14120 | 12500 | 12500 | 11440 | kg | | | | |
| 55 | | | | | | 28,8 | 30 | 35 | 40 | 45 | 52,30 | 55,0 | m | | | | |
| | | | | | | 25000 | 23840 | 20000 | 17150 | 14950 | 12500 | 12500 | kg | | | | |
| 50 | | | | | | | 29,3 | 35 | 40 | 45 | 49,1 | m | | | | | |
| | | | | | | | 25000 | 20400 | 17500 | 15260 | 13750 | kg | | | | | |
| 45 | | | | | | | | 29,3 | 35 | 40 | 44,1 | m | | | | | |
| | | | | | | | | 25000 | 20420 | 17520 | 15620 | kg | | | | | |
| 40 | | | | | | | | | 29,4 | 35 | 39,1 | m | | | | | |
| | | | | | | | | | 25000 | 20520 | 18040 | kg | | | | | |
| 30 | | | | | | | | | | 28,9 | 29,1 | m | | | | | |
| | | | | | | | | | | 25000 | 24750 | kg | | | | | |



Datos válidos hasta 100 m de ABG. Para alturas mayores consultar / Valid data up to 100 m HUH. Additional heights on request / Données valables jusqu'à 100 m HSC. Pour des autres hauteurs, merci de nous consulter / Gültige Daten bis zu 100 m HH. Bei höheren Hakenhöhen nachfragen / Dati validi fino a 100 m ASG. Per altezze superiori consultare Comansa / Допустимые данные до 100 м ВПК. Для более высоких высот консультируйтесь

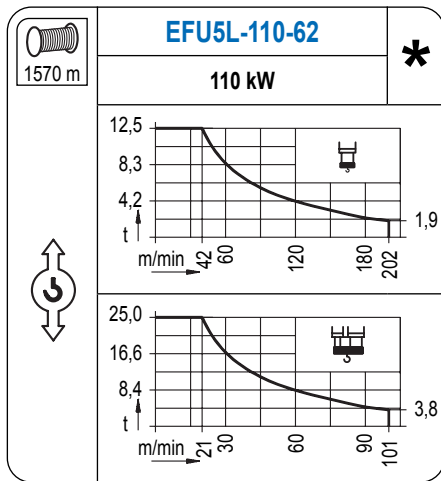
MECANISMOS

Mechanisms / Mécanismes / Antriebe / Meccanismi / Механизмы

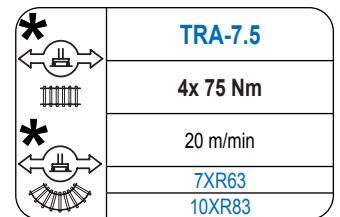
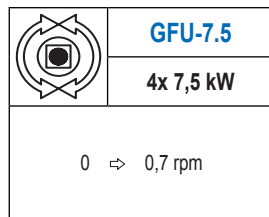
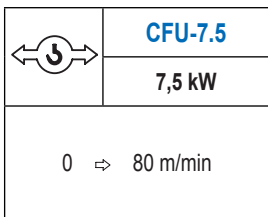


MECANISMOS

Mechanisms / Mécanismes / Antriebe / Meccanismi / Механизмы



Para mecanismos de alta capacidad de cable consultar cargas. / For mechanisms with high drum capacity, request loads. / Pour des mécanismes avec une grande capacité de câble il faut consulter. / Für Hubmechanismen mit hoher Kabelkapazität, Lastdiagramm anfragen. / Gru con tamburo ad alta capacità di avvolgimento fune, consultare il diagramma di carico. / Проконсультируйтесь с нагрузках при механизмах с большей вместимостью кабеля.



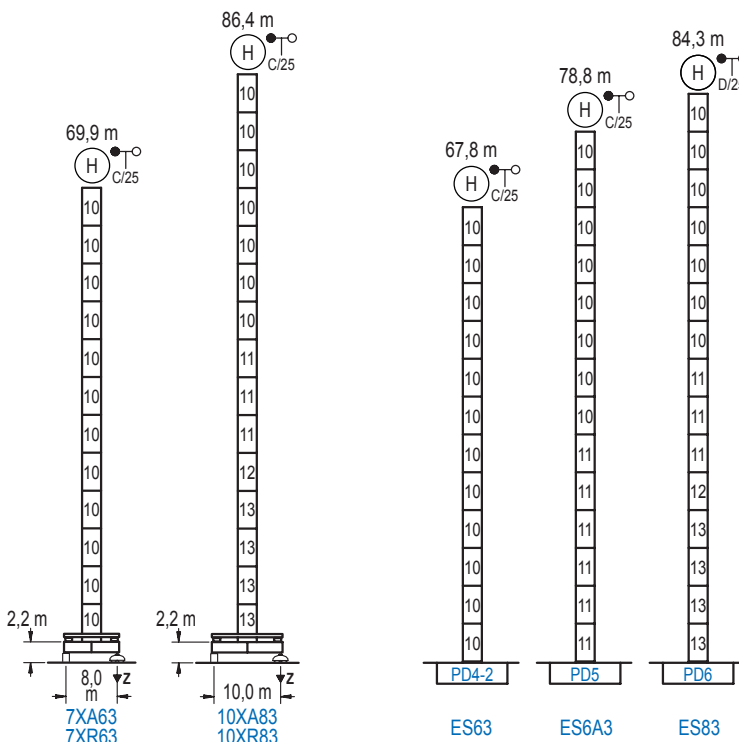
| Elevación / Hoist / Levage / Hub / Sollevamento / Тип механизма (подъем) | Carro / Trolley / Chariot / Laufkatze / Carrello / Грузовая тележка | Giro / Slewing / Rotation / Drehbewegung / Rotazione / Поворот | Traslación / Travel / Translation / Verfahrbewegung / Traslazione / Ход | Tensión de alimentación / Operating voltage / Tension de service / Betriebsspannung / Tensione di alimentazione / Напряжение источника питания | Potencia requerida / Required power / Puissance requise / Benötigte Leistung / Potenza richiesta / требуемая мощность |
|--|---|--|---|--|---|
| EFU6-65-62 | CFU-7.5 | (4x) GFU-7.5 | (4x) TRA-7.5 | 400 V 3 ph 50 Hz | 95 kVA |
| EFU5-110-62 | | | | | 140 kVA |
| EFU5L-110-62 | | | | | 140 kVA |

| |
|--|
| Optional / Optional / En option / Kaufoption / Opzionale / Опционально |
| * |

ALTURAS BAJO GANCHO

Heights under hook / Hauteurs sous crochet / Hakenhöhen / Altezza sotto gancio / Высота под крюком

∅ 2,5 m



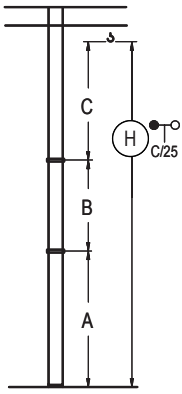
| | n° | Ref. | ∅ | h |
|--|----|-------|-----|-----|
| | 10 | D34 | 2,5 | 5,5 |
| | 11 | D35 | 2,5 | 5,5 |
| | 12 | TD36B | 2,5 | 5,5 |
| | 13 | D36B | 2,5 | 5,5 |

| Z máx. | En servicio / In operation / En service / In Betrieb / In servizio / При работе | 7XR63..... 141 t 10XR83..... 145 t |
|--------|--|---------------------------------------|
| | Fuera de servicio / Out of service / Hors service / Ausser Betrieb / Fuori servizio / В стационарном состоянии | 7XR63..... 138 t 10XR83..... 187 t |

Otras zonas de viento o alturas superiores consultar / Other wind zones or additional hook heights on request / Autres zones de vent ou des hauteurs supplémentaires sur demande / Andere Windzonen oder weitere Hakenhöhen auf Anfrage / Per zone con velocità del vento particolari o altezze superiori consultare il fabbricante / При других ветренных зонах о при большой высоте проконсультируйтесь с нами

GRÚA ARRIOSTRADA

Braced crane / Grue à entretoisement / Abgespannter Kran / Gru ancorata / Нарастиваемый кран

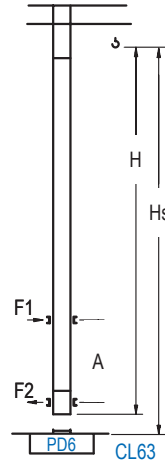


| | 7XA63 | 10XA83 |
|-------|-------|--------|
| A max | 57,2 | 73,7 |
| A min | 29,7 | 51,7 |
| B max | - | 38,5 |
| B min | - | 22,0 |
| C max | 51,2 | 51,2 |
| H max | 108,4 | 146,9 |

| | ES63 | ES6A3 | ES83 |
|-------|-------|-------|-------|
| A max | 55,1 | 66,1 | 71,6 |
| A min | 27,6 | 44,1 | 49,6 |
| B max | - | 38,5 | - |
| B min | - | 22,0 | - |
| C max | 51,2 | 51,2 | 51,2 |
| H max | 106,3 | 144,8 | 161,3 |

GRÚA TREPADORA

Internal climbing crane / Grue avec cage de télescopage intérieure / Kran mit klettern im Gebäude / Gru in rampante in cavedio / Кран с самоподъемом



| H C/25 | Hs < 400 m | |
|---|------------|-----------|
| | A max (m) | A min (m) |
| 60,5 m 6x D34 + 4x D34A + CLD34A-24 | 21,9 | 10,0 |
| 55,0 m 5x D34 + 4x D34A + CLD34A-24 | 19,1 | 9,0 |
| 49,5 m 4x D34 + 4x D34A + CLD34A-24 | 16,4 | 8,0 |

| n° | Ref. | ∅ | h |
|----|-----------|-----|-----|
| 20 | D34A | 2,5 | 5,5 |
| 21 | CLD34A-24 | 2,5 | 3,8 |

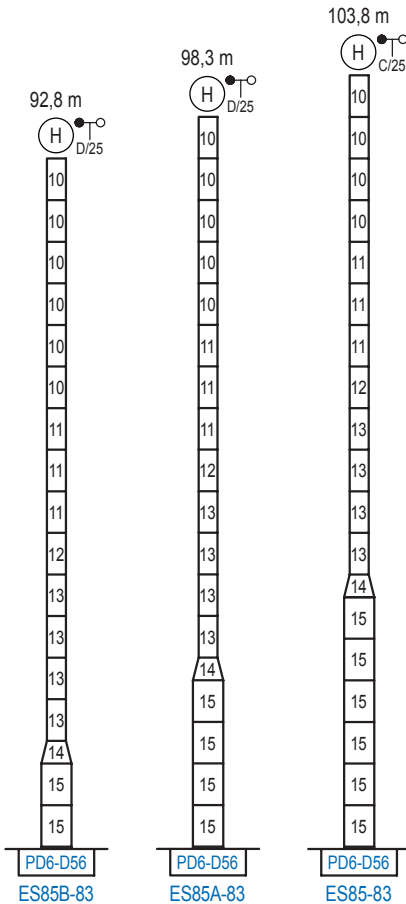
Otras zonas de viento, alturas superiores, arriostramientos o trepado interno consultar / Other wind zones, additional hook heights, tie frames or internal climbing on request / Autres zones de vent, des hauteurs supplémentaires, entretoisements ou grues avec cage de télescopage intérieure, sur demande / Andere Windzonen, weitere Hakenhöhen, Abspannungen zum Gebäude oder Klettern im Gebäude auf Anfrage / Per zone con velocità del vento particolari, altezze superiori, ancoraggi o rampante in cavedio, consultare il fabbricante / При других ветренных зонах, при большой высоте, привязках к зданию или наращивании крана внутри здания проконсультируйтесь с нами

ALTURAS ESPECIALES

Special heights / Spéciaux hauteurs / Extra Höhen / Conformazioni raccordate per altezze speciali / Для специальной высоты

∅ 4,0 m

2100 Series



| n° | Ref. | ∅ | h |
|----|---------|-----|-----|
| 10 | D34 | 2,5 | 5,5 |
| 11 | D35 | 2,5 | 5,5 |
| 12 | TD36B | 2,5 | 5,5 |
| 13 | D36B | 2,5 | 5,5 |
| 14 | TD56D36 | 4,0 | 3,0 |
| 15 | D56 | 4,0 | 5,5 |

Otras zonas de viento o alturas superiores consultar / Other wind zones or additional hook heights on request / Autres zones de vent ou des hauteurs supplémentaires sur demande / Andere Windzonen oder weitere Hakenhöhen auf Anfrage / Per zone con velocità del vento particolari o altezze superiori consultare il fabbricante / При других ветренных зонах о при большой высоте проконсультируйтесь с нами