



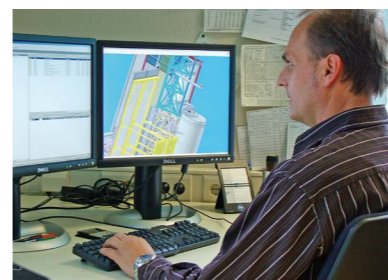
**GEDA**<sup>®</sup>  
ORIGINAL



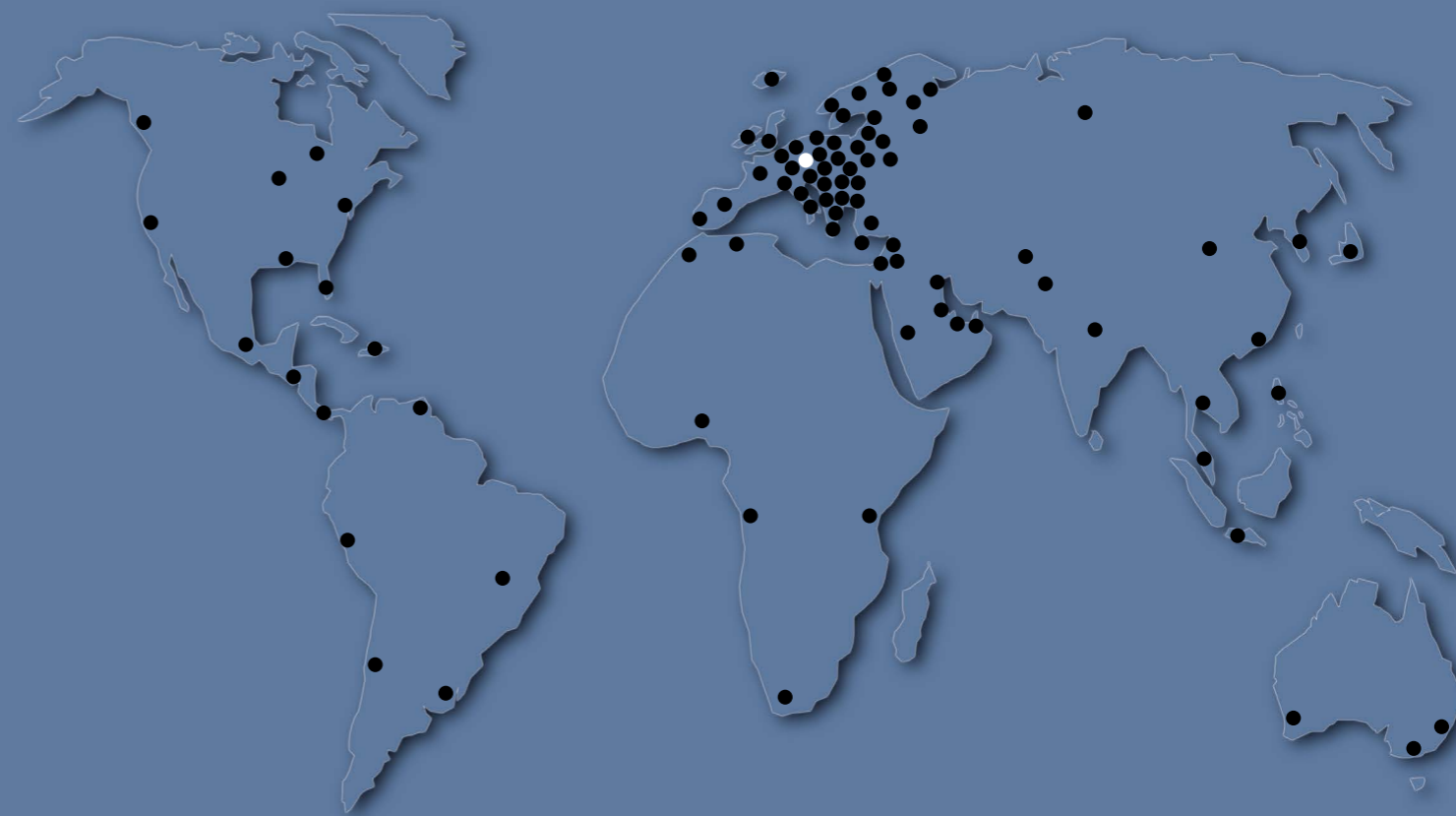
- ▷ Innovations
- ▷ Know-how
- ▷ Up-to-date production technologies



**GEDA**<sup>®</sup>  
ORIGINAL



**GEDA**<sup>®</sup>  
World-wide competence



**GEDA**<sup>®</sup>  
SOLARLIFT



Your dealer:

Empty rectangular box for listing a dealer.

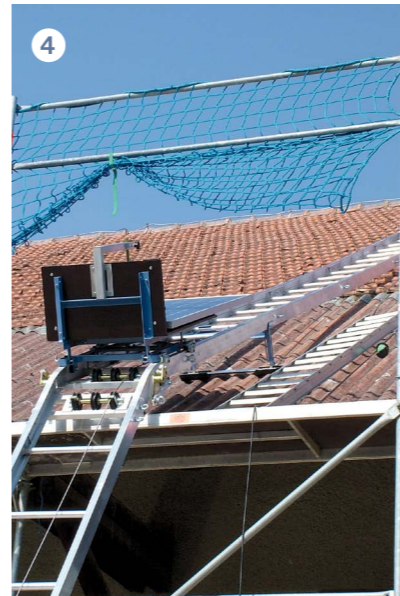
**GEDA**<sup>®</sup>  
ORIGINAL

**GEDA-Dechentreiter  
GmbH & Co. KG**

Mertinger Straße 60  
86663 Asbach-Bäumenheim  
Phone +49 (0) 906 9809-0  
Fax +49 (0) 906 9809-50  
info@geda.de  
[www.geda.de](http://www.geda.de)

**GEDA**<sup>®</sup>  
SOLARLIFT

The hoist for transport of solar elements and photovoltaic modules



- 1 The solar platform is especially equipped with rubber cushioning. The flexibly adjustable fixing grants safe transport.
- 2 The handy collector platform is adjustable for 0.5 – 1.6 m panel width.
- 3 The third transport possibility: the multi-purpose platform with folded lateral protection and front flap.
- 4 You can also tile the roof below the ladder using the roof trestle, which is variably adjustable between 37 and 60 cm. Two variants of the continuously adjustable angle track section are available; with long and short blades or equally long blades.
- 5 You can easily transport the winch using a cart – this allows for the components of the dismantled GEDA Lift to be easily moved and stored in a space saving manner.
- 6 Ladders for up to 200 kg load capacity.
- 7 Inforced ladders for up to 250 kg load capacity.

**Base unit consisting of:**

- **electrical winch** 230 V/50 Hz with 43 m rope (Ø 6 mm), 21 m limit switch cable, control (24 V) with emergency-stop and 5 m cable (control and limit switch pluggable for GEDA LIFT 250 COMFORT and FIXLIFT, already installed for GEDA LIFT 200 STANDARD)
- **standard trolley** with safety brake in case of rope breakage
- **head section** with snap closing pulley
- **foot section** 2 m

Now up to **250 kg!**

**GEDA**<sup>®</sup>  
**LIFT 200 STANDARD**  
*solid & inexpensive*

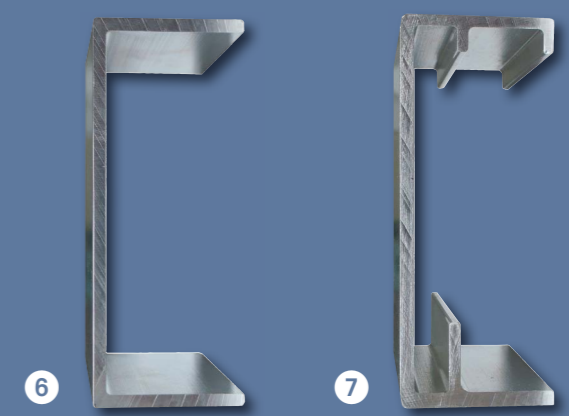
Load capacity up to **200 kg**  
Lifting speed **25 m/min**  
1 kW/230 V/50 Hz

**GEDA**<sup>®</sup>  
**LIFT 250 COMFORT**  
*reliable & powerful*

Load capacity up to **250 kg**  
Lifting speed **30 m/min**  
1.3 kW/230 V/50 Hz

**GEDA**<sup>®</sup>  
**FIXLIFT 250**  
*fast & practical*

Load capacity up to **250 kg**  
Lifting speed **19/38 m/min**  
0.6/1.2 kW/230 V/50 Hz



The GEDA SOLARLIFT transports the **highly sensitive solar elements** and **photovoltaic modules** safely to the roof. The smooth start guarantees gentle transport of the sensitive modules. The GEDA SOLARLIFT increases the worker's security and thus reduces considerably the risk of accidents.